

- 1
- 2
- 3
- 4
- 5
- 6
- 7
- 8
- 9
- 10
- 11
- 12
- 13
- 14
- 15
- 16
- 17
- 18**
-

MATERIAL

Aluminium, epoxy resin coating, RAL 9005 black colour, matte finish.
AISI 304 stainless steel screw and nut.

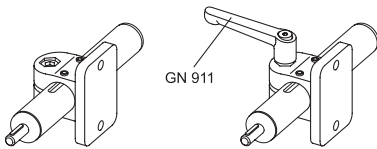
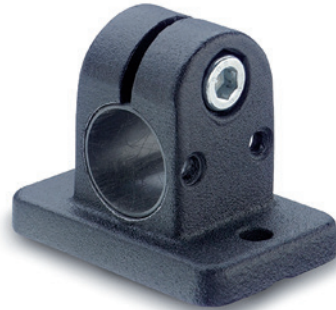
STANDARD EXECUTIONS

- **GN 145.1-B**: without sliding bushing.
- **GN 145.1-G**: with a polyamide based (PA) or polytetrafluoroethylene based (PTFE) technopolymer sliding bushing.

FEATURES AND APPLICATIONS

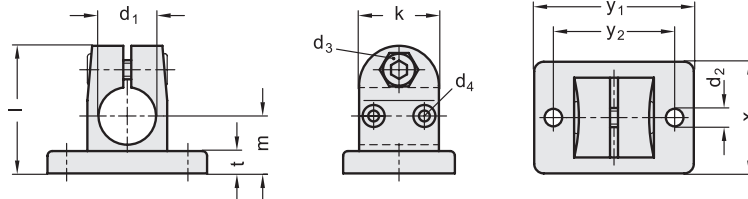
GN 145.1 connecting clamps can normally be matched with the linear actuators.

By clamping the guide hole d1 it is possible to adjust the actuator positioning and to lock the slider after having set up the final position. The clamping screws d3 may be replaced by clamping kits GN 911 (see page 1958).



GN 911

Conversion Table 1 mm = 0.039 inch	
d1	
mm	inch
18	0.71



METRIC

Code	Description	d1#	d1##	d2	d3	d4	k	l	m	t	x	y1	y2	d3 Clamping kit	⚖️
GN.45706	GN 145.1-B18-2-SW	18	-	5.5	M6	M3	25	40	18	7	35	50	38	GN 911-M6-22	60
GN.45716	GN 145.1-G18-2-SW	-	18	5.5	M6	M3	25	40	18	7	35	50	38	GN 911-M6-22	57

Hole without sliding bushing.
Hole with sliding bushing.